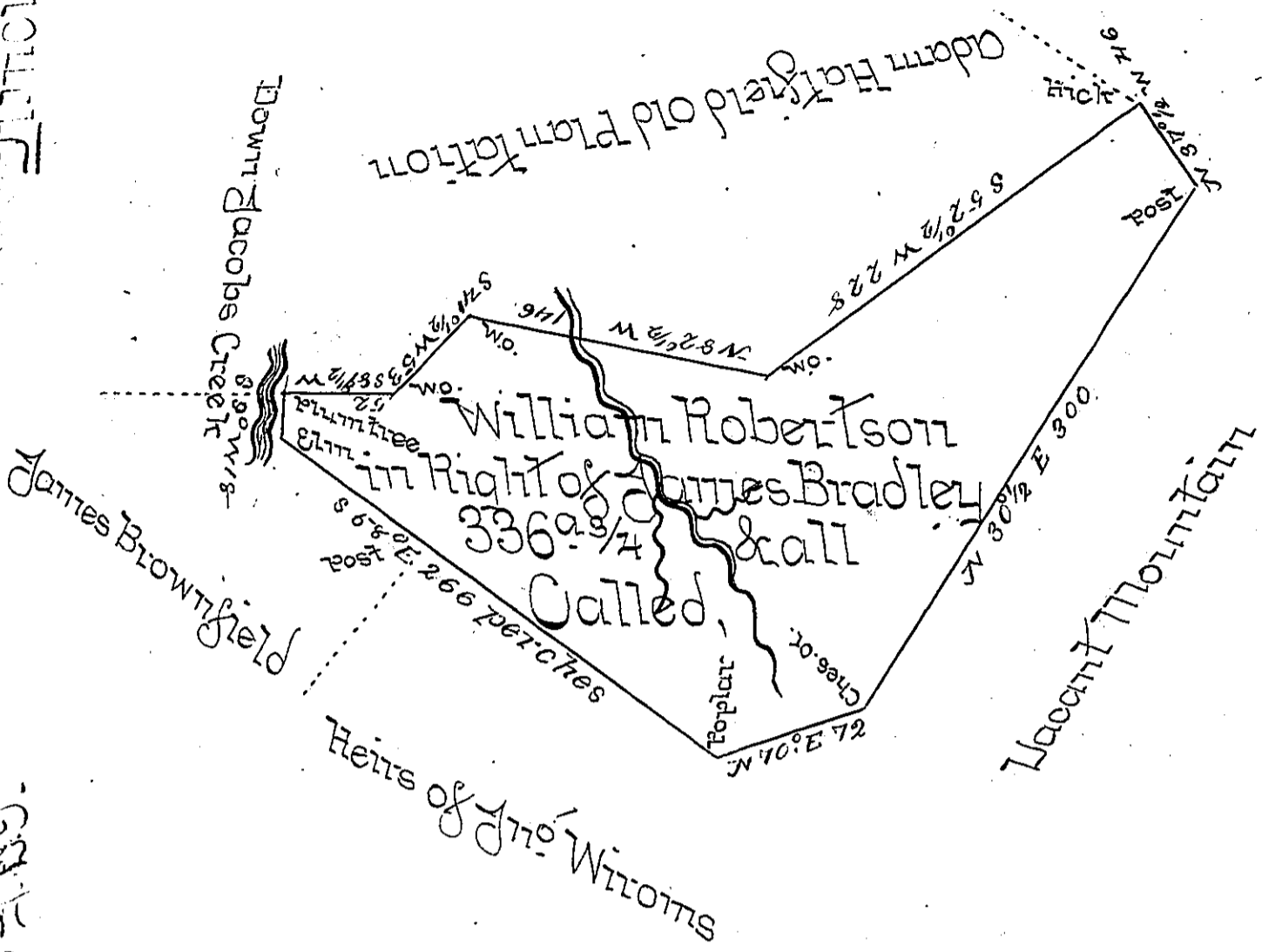


NB There is a great excess in amount of acreage
to the north of the boundary on the mountain
and submit the same to be accepted
1899.



Situated in Bull Run County
 Township Jayette and Surveyed ye
 11th day of July 1786: In Pursuance of a Warrant dated
 the 26th Day of July 1784.
 Alexander McClean Dep^y.

To John Lukens Esquire Surveyor General.

IN TESTIMONY that the above is a copy of the original remaining on file in
 the Department of Internal Affairs of Pennsylvania, made
 conformably to an Act of Assembly approved the 16th day of
 February, 1833, I have hereunto set my Hand and caused
 the Seal of said Department to be affixed at Harrisburg,
 this Third day of May 1898

James W. Patton
 Secretary of Internal Affairs.